

TUGS TOWING & OFFSHORE NEWS SPECIAL “LINGESTROOM”



Advertisement

	PROVEN DESIGN & STANDARDISED FIRST CLASS COMPONENTS	

On Wednesday April 26, 2017 the new build Damen Shipyards Hardinxveld yard number 571764 Shoalbuster 3512 “[Lingestroom](#)” was christened at the Dutch shipyard

Shoalbuster [Lingestroom](#) (Imo 9819404) is the second addition to the Van Wijngaarden Marine Services B.V. of this type

[Lingestroom](#) is a new type shoalbuster and a very unique design from Damen Shipyard Hardinxveld-Giessendam

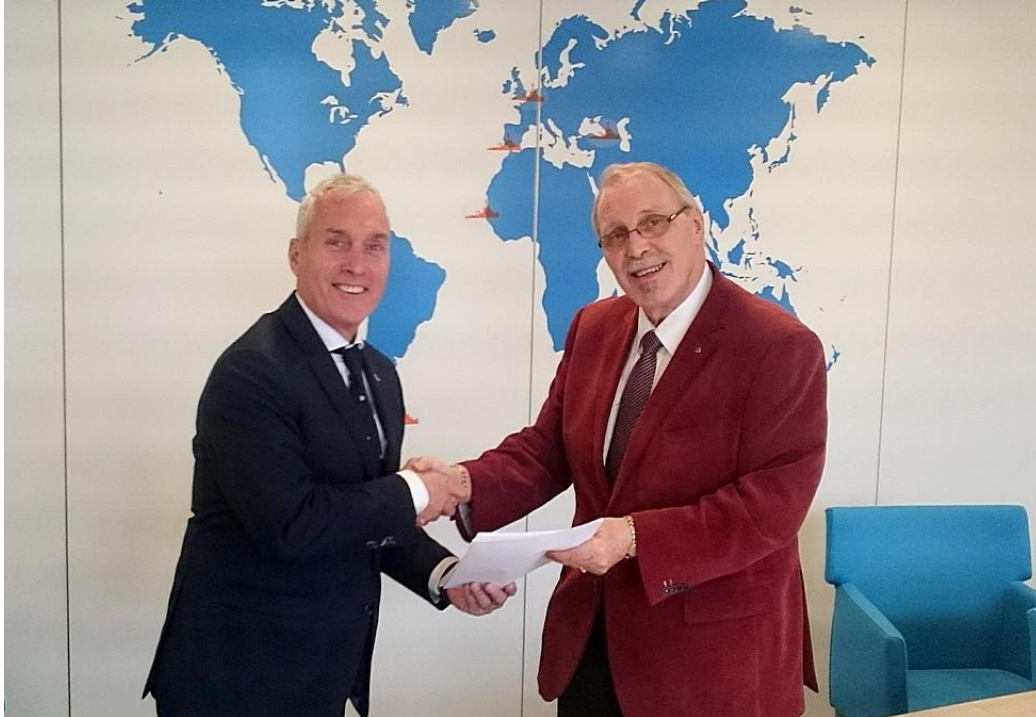
The multifunctional tug is built for Towing, mooring, pushing, anchor handling, suppling and dredging support operations

She is classed Bureau Veritas BV - I HULL • MACH / Tug, Special service - multipurpose ship /
Unrestricted navigation • AUT-UMS

Notation: Anchor Handling / Notation: Clean ship

NSI - Unrestricted navigation with call sign PICW

IMO - Inventory of Hazardous Materials (Green Passport)



Contract signing between Damen Shipyard Hardinxveld and Van Wijngaarden Marine Services
Mr. Jos van Woerkum and Mr. W. van Wijngaarden

Yard number 571764 under construction



Photo: Van Wijngaarden Marine Services



Photo: Henk van Milligen



Sponsor lady of the Tug/Workboat
Lingestroom was Mrs I.C. van
Wijngaarden-Ruitenbeek
Spouse of Managing Director Mr. Peter
van Wijngaarden

Bottle of Champagne broken on the
vessels bulwark



Photo: Ruud Aantjes

THE RIGHT PARTNER
Chartering Tugs / Workboats
Assistance & Supply Services
Inland- & Seagoing Towing



WWW.WIJNGAARDEN.COM
+31 (0)184 490 244 (24/7)



**VAN WIJNGAARDEN
MARINE SERVICES B.V.**



Photo: Leen van der Meijden

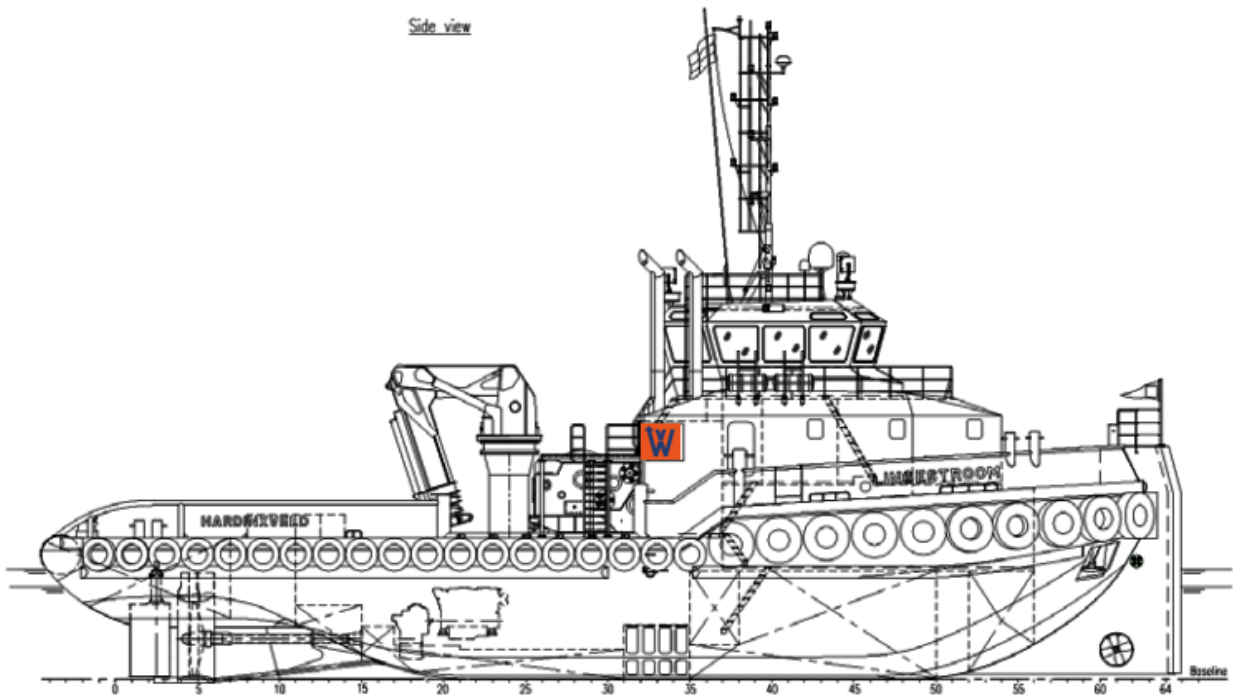




The tug was handed over by Damen yard manager Jos van Woerkum (left) to the new owners Van Wijngaarden Marine Services in name managing director Peter van Wijngaarden (right)

The “**Lingestroom**” has a length of 34.80 meters. She is width 12.00 meters and has a depth at half-length at sides of 4.30 meters. Her shallow draft minimum is 2.90 meters and maximum 3.40 mtrs.. She has a grt. of 476 tonnes a nrt of 142 tons and a has a displacement of 597 tons.



**Propulsion system:**

The main power is provided by three Caterpillar C32-TTA SCAC diesels each developing 970 kW (1,319 hp) at 1,800 rev/min. This is delivered to a three screw arrangement fixed pitch propellers turning in 2,250 mm Van der Giessen optima nozzles via Reintjes WAF675L gearboxes with reduction ratio of 7.07:1. On trails, this configuration gave the vessel an average bollard pull ahead of 56 tonnes and a free running speed of 11.5 knots. The 243 kW (320bhp) (Ø 960 mm) bow thruster is Electric driven FPP.



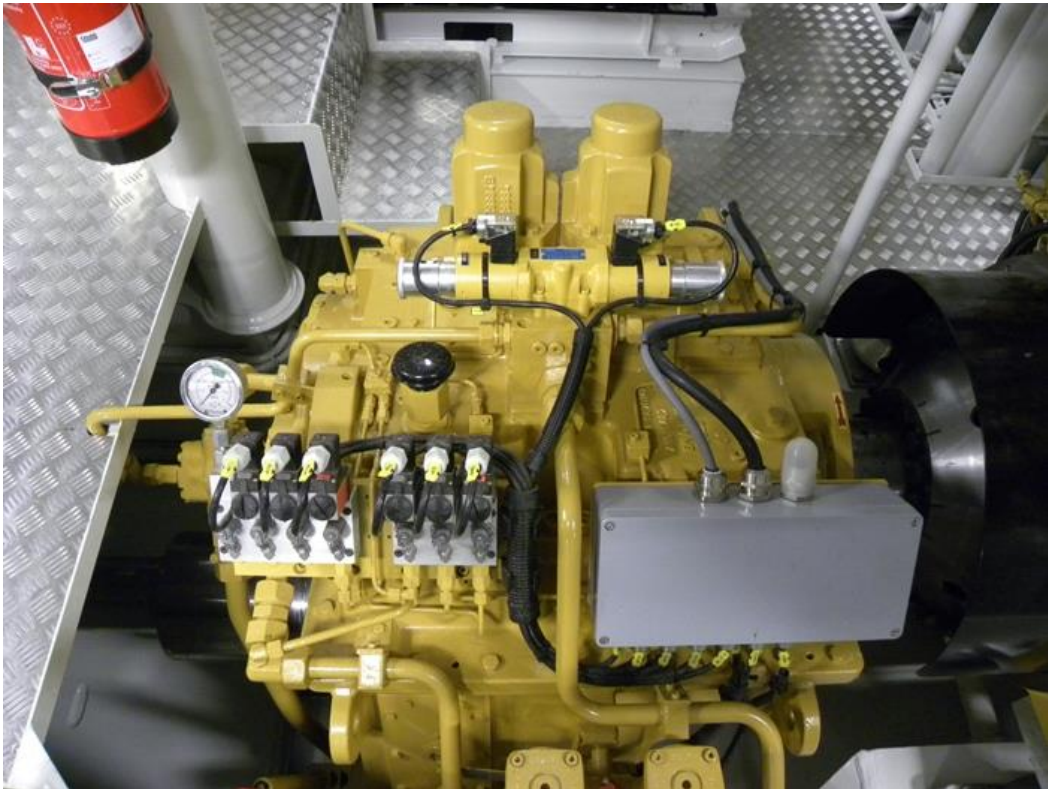
PS Caterpillar Main engine



SB Caterpillar Main engine



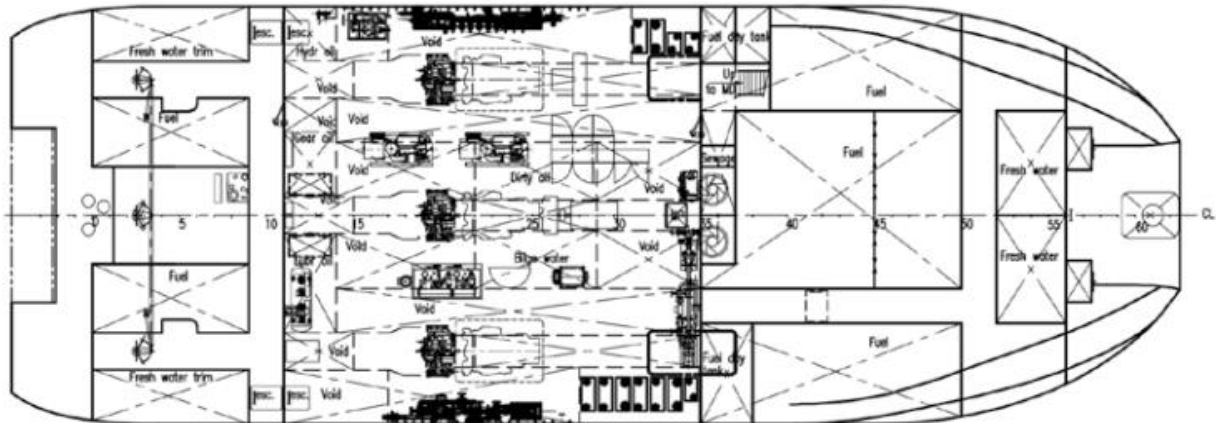
Centre Caterpillar Engine gearbox view



Gearbox main engines



Centre Caterpillar E-generator view

Below main deck*Below main deck*

Auxiliary equipment:

The **Lingestroom** has two Generator sets made Caterpillar C7.1 units, each with an output of 187.5 kVA, 50Hz – 230/400V AC; an E-Power Generator Combined with center C32 main engine with clutch able Leroy Somer LSA49.1 generator with an output of 600 ekW, 60 Hz @ 1,800 rpm - 440 VAC; an Electric drive hydro set with three E-motors; two with a capacity of 110 kW each and one E-motor with a capacity of 52 kW, 60Hz @ 1,800 rpm – 440VAC. The fuel separator is from Westfalia type OTC-2. The transfer pumps for water and fuel are type SIHI with a capacity of 50m³/hr at 4.8 bar. The two Compressors has a capacity of 175 L/min each. Her sewage treatment installation is a Hamman Super mini with a capacity for 12 persons. The bilgewater separator is from Facet type CPS-2,5MKIII capacity 0,5m³/hr. The tug also has a fresh water maker type HEM with a capacity of 4,5 m³/day at a sea water temperature of 25° C.



One of the two Caterpillar generator sets



Main Switchboard



Electric power distribution board



Air compressor set



Hydraulic powerpack unit



E-motors hydraulic pumps



Fuel oil separator



Oily water separator



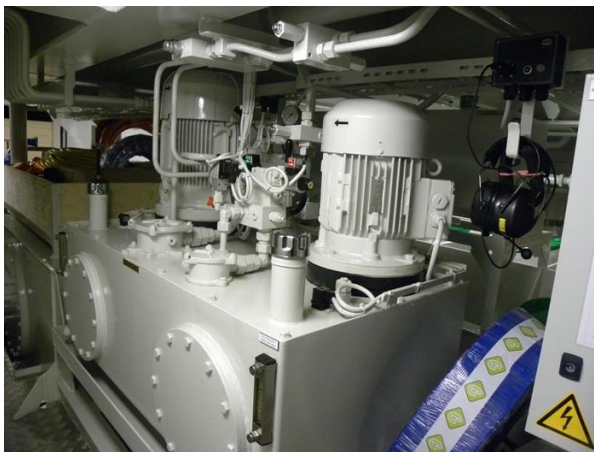
Sewage installation



Freshwater maker



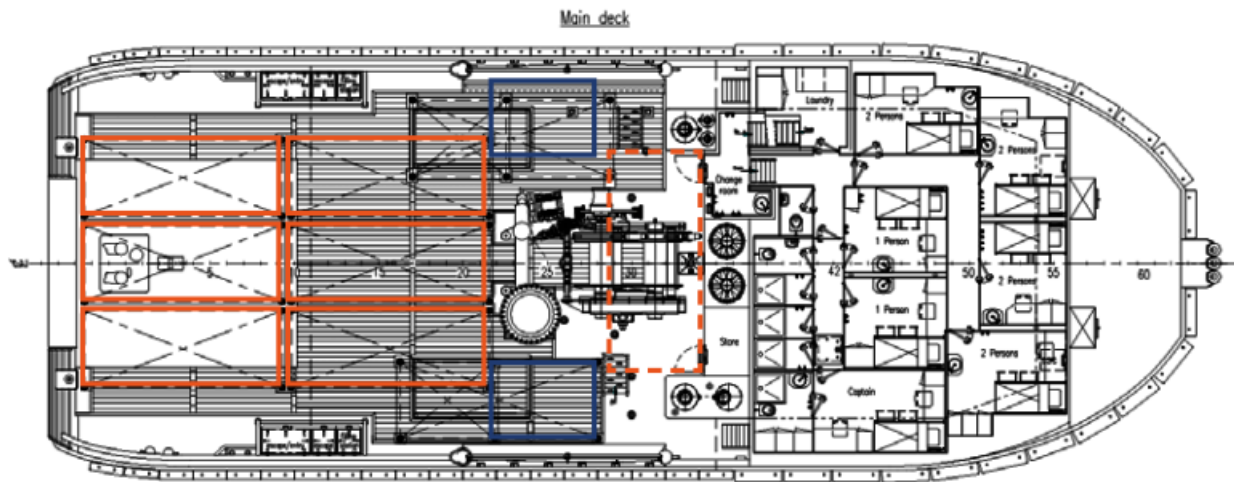
SB side main engine coolingwater coolers



Hydraulic powerpack for steering gear



Steering gear port side

Deck layout:**Deck Lay out:**

The deck machinery comprises a two Kraaijeveld hydraulic driven Anchor Winch. Two Pool (HHP) anchors of 450kg each with a 22 mm short-link anchor chain 247.5m. The towing winch acc. to regulations of Noble Denton is a Kraaijeveld Waterfall winch with a towing pull capacity of 59.1 ton at 9.51 m/min at 1st layer. The free pulling capacity is 11.8 tons at 32.4 m/min. She has a holding force of 115 tons. On the drum is a wire fitted with 1,000 mtrs in length and with a diameter of 48 mm. The anchor handling winch has a towing pull capacity of 101.7 tons at 5.7 m/min at the 1st layer. The free pulling capacity is 20.4 tons at 19.4 m/min. This winch has a holding force capacity of 150 tons. On her drum is a wire with a length of 600 mtrs and a diameter of 48 mm fitted. The deck crane is from HS Marine type AKC290-LHE3 with a lifting capacity of 11.3 tons at 16.5 mtrs range and 24.4 ton at 7.89 mtrs range. On the aft deck is a Dromec HPV-1200 tugger winch mounted with a capacity of 12 tons at 20 m/min at the 1st layer. Finally a towing pin set type WK2 flipper and a chain stopper for 100 tons SWL. Container locks for 7 containers of 20 ft and 3 containers of 10 ft. The itself has a pushing bow.



Two drums Towing / Anchor Handling winch bridge view



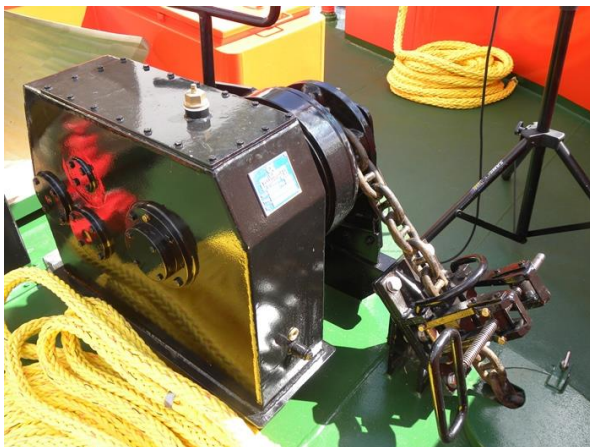
Towing / Anchor handling winch arrangement deck view



Tuggerwinch



Fuel supply winch



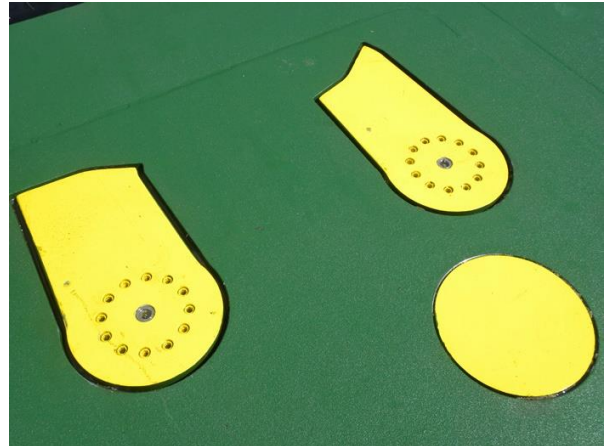
PS Anchor winch



Fore deck arrangement



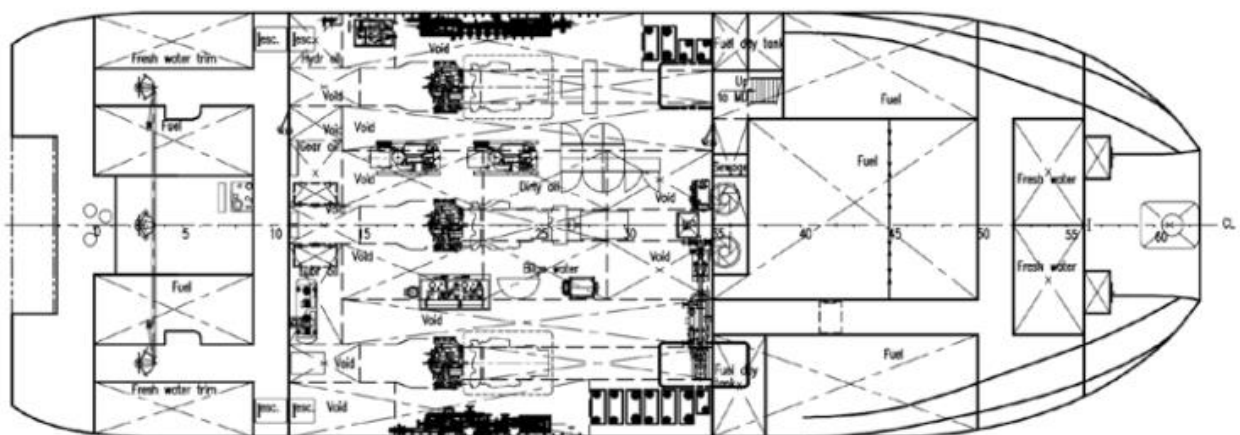
Ship's Bell



Chain stopper set

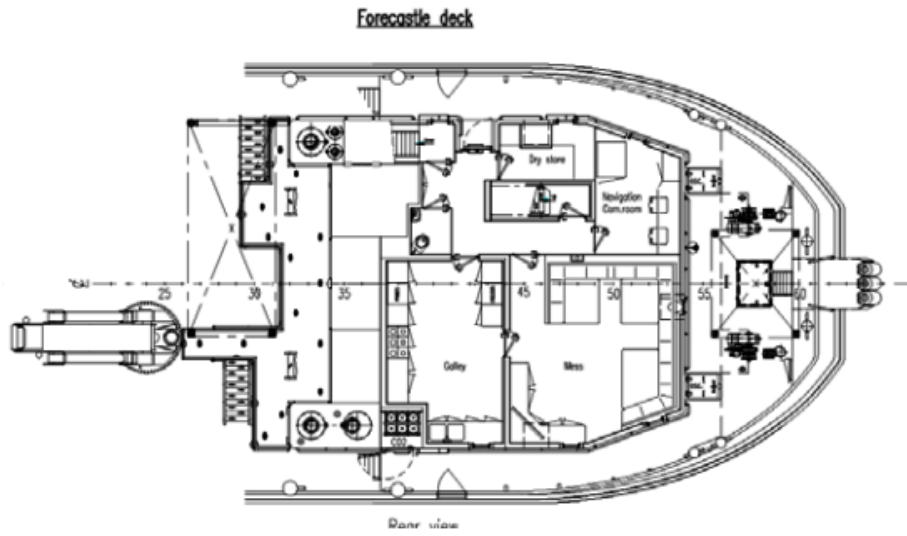


Tank arrangements/capacity:



The tug consist tanks for the following liquids; Fuel tanks capacity of 255 m³; Fresh water tanks with a capacity of 43 m³; Lubrication oil with a capacity of 3.7 m³; Hydraulic oil with a capacity of 2 m³; Gear oil with a capacity of 3.3 m³, Dirty oil tank with a capacity of 4.50 m³; sewage tank with a capacity of 5,8 m³; bilgewater tank of 5 m³ and a sludge tank with a capacity of 2 m³.

Accommodation:



The tug has been outfitted to the highest standards heated and air-conditioned living quarters for 11 persons, consisting of a captain’s cabin, an four double crew cabins and two single crew cabins a galley and a messroom and sanitary facilities according to ILO 2006 regulations.



Captain's cabin



Double bedroom cabin



Messroom



Messroom



Messroom



Office



Galley sink arrangement



Galley - Stove



Laundry

Nautical and Communication Equipment:

The bridge is equipped with extensive nautical and communication equipment according GMDSS Area A3. The nautical equipment consist two Radar system Furuno FAR-2117; an Anschuetz Standard 22 Compact Gyrocompass; a Magnetic compass Kotter Cassens & Plath Reflecta 1, a Furuno GP-170D-GPS; a Furuno FA-150 AIS; a Simrad AP-70 Autopilot; a Furuno FE 800 Echo Sounder + one Sigma 120, a Furuno NX700 Navtex receiver; a Marble 421 Bridge watch alarm; three Pesch 1000W searchlights, electric actuated. The communication consist two Sailor RT6222 25W VHF radio telephone; a Sailor 6248 Single Side Band/DSC; Two Inmarsat C Thrane & Thrane 6110; a Speedlog Furuno DS-80; two Handheld VHF sets Jotron TR20; a Radio Zeeland Sigma 700 Intercom system; a GSM telephone type Sagem RT-3000; a Furuno FS-1575 MF/HF transceiver with DSC; a Meteoscan combined into Maritime PC Weatherfax; a Thrane & Thrane Fleetbroadband 150 Fleet system; a Seatel ST24 Sattelite TV System; a Meteo system Obsermer OMC-115 wind indicator; a ECDIS – VSAT system



Forward Bridge console view



Radars forward bridge console view



Aft bridge console



PS Aft bridge chart table

Two chairs are fitted on sliding rails for the forward manoeuvring console and the aft manoeuvring console. Further a bridge chart table is found at the port side aft bridge. The very spacious bridge has a beautiful good looking layout with an around view over the fore deck, aft deck and sides. This Damen Shoalbuster is again built to the highest standards.



Stern view



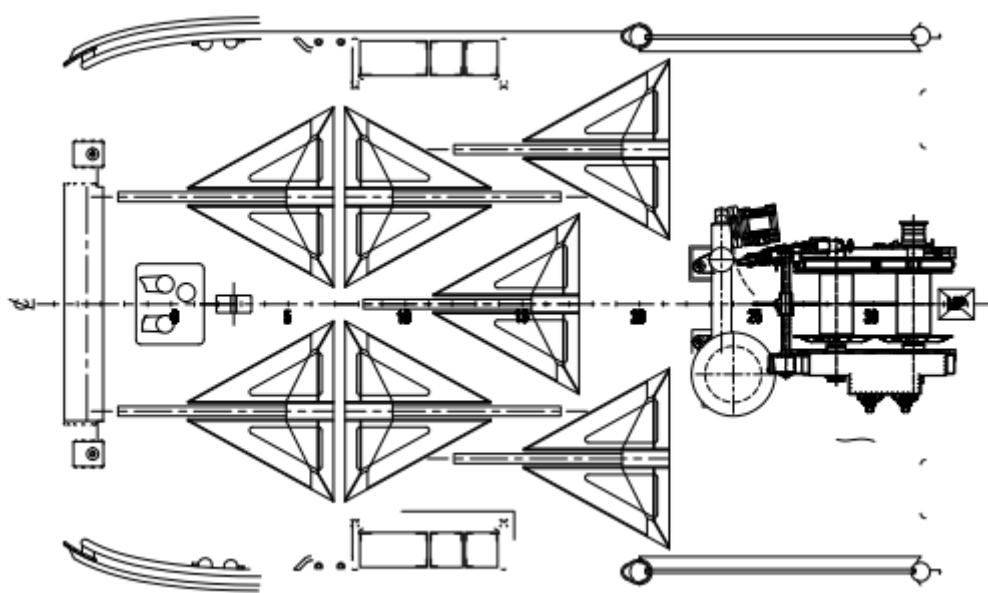
Bow view

As optional the **Lingestroom** can be fitted with the following equipment:

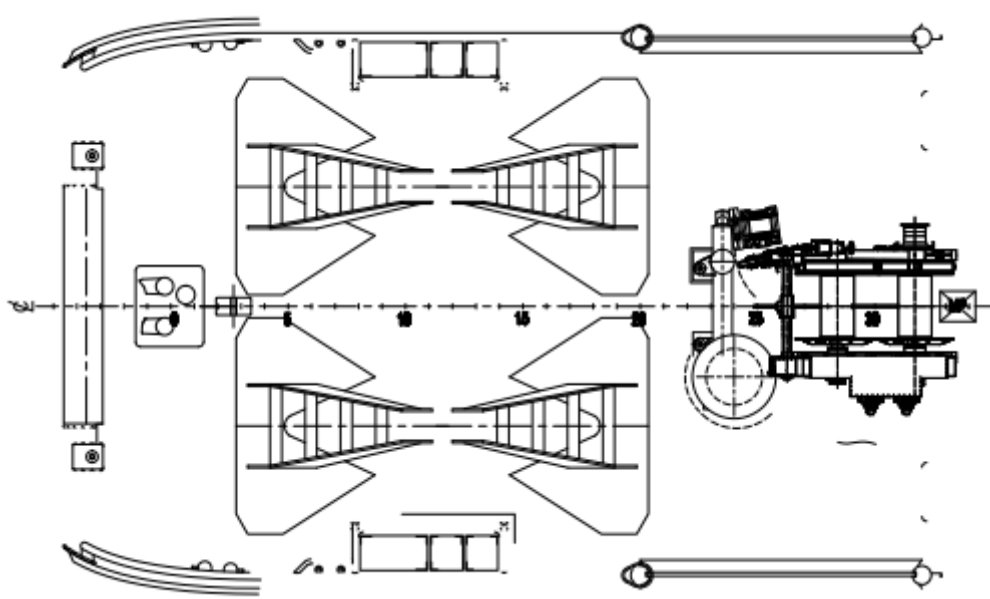
- Anchor-Handling
- Supplying
- 4 points mooring system
- A-Frame (50 tons SWL)
- Ploughing equipment
- Water injection dredging system
- Diving operations platform
- ROV platform

Anchor-Handling Options

- Delta Flipper anchors 7 units of 7.5 tonnes

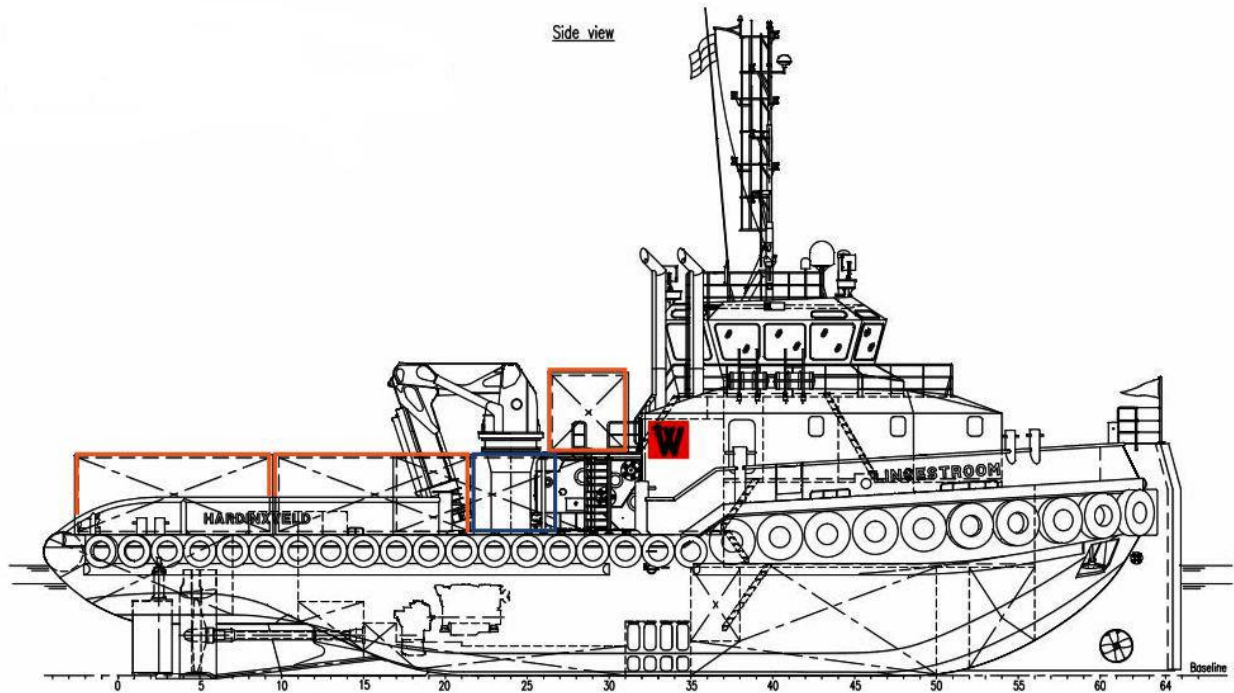


- Stevpris anchors 4 units of 5,0 tonnes

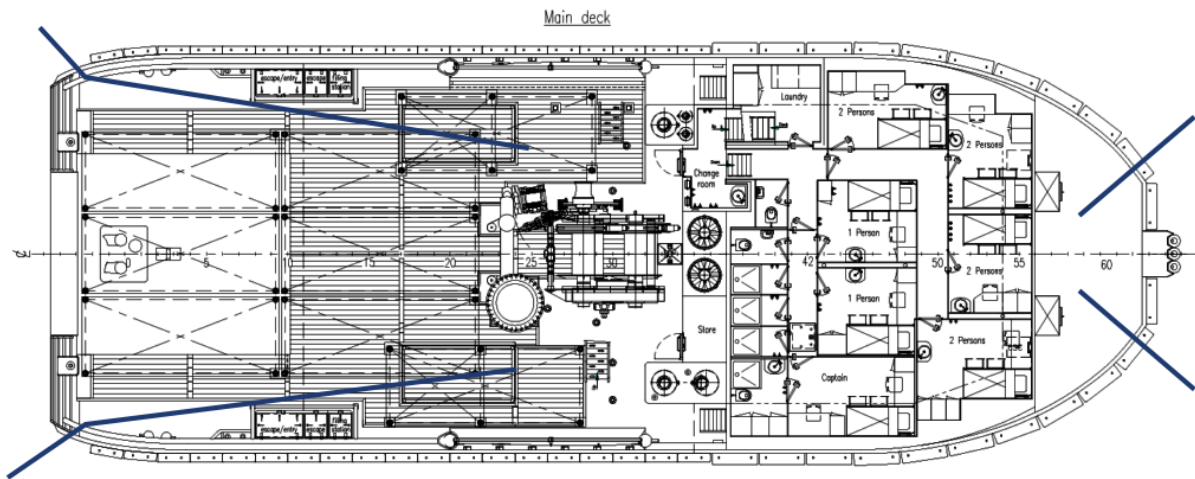


Supplying Options:

- Containers (7x 20 ft. & 2x 10 ft.)
- Transfer pumps: Fuel & Fresh water (50 m³/hr.)

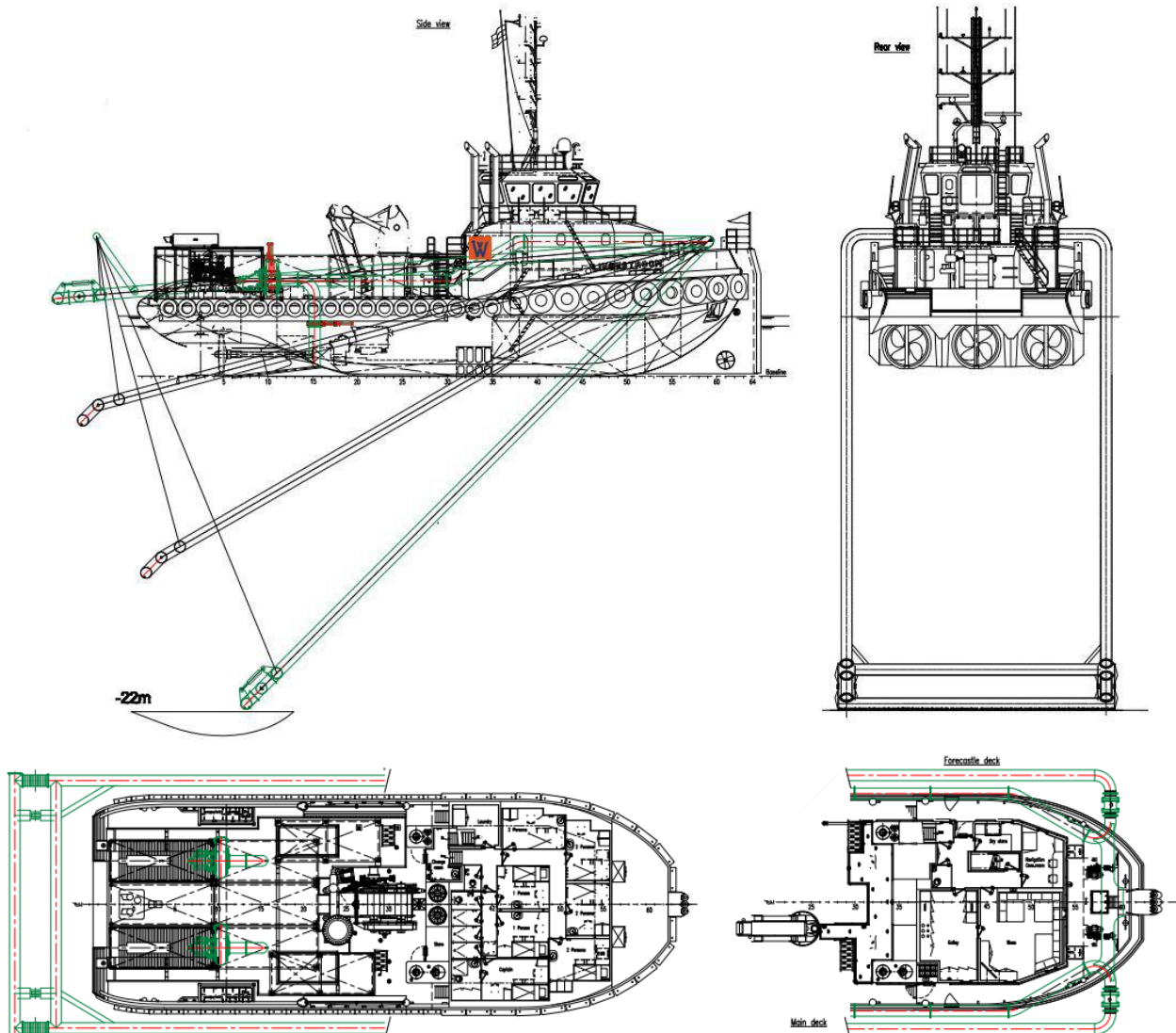


4p-Mooring system

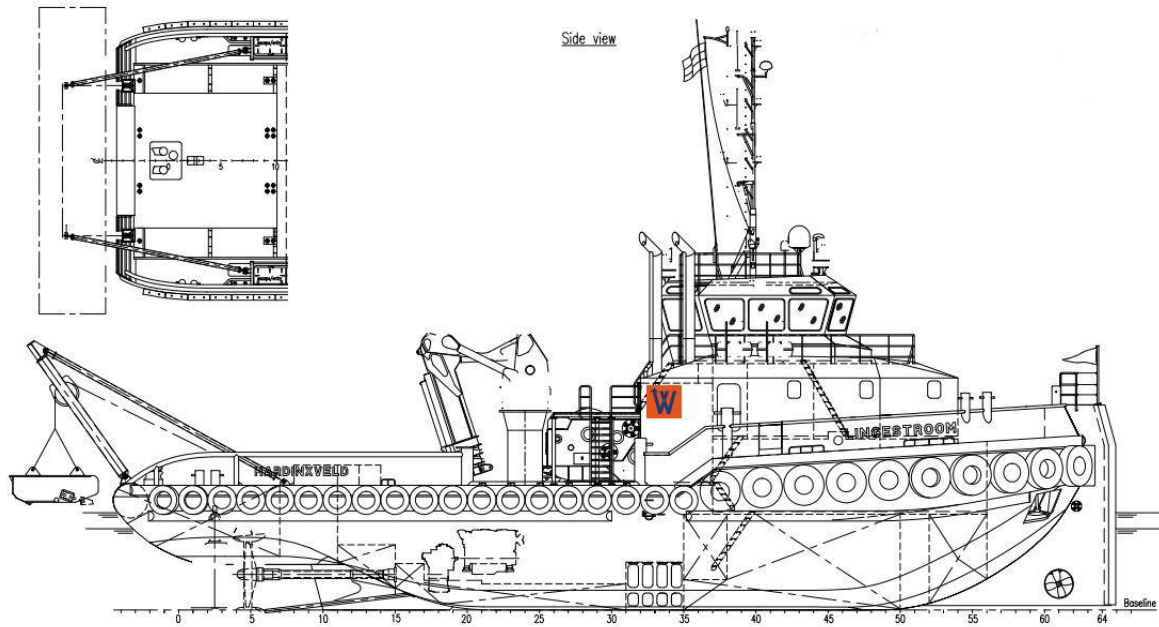


Dredging Support:

- Water injection Dredging / WiD-system



- Ploughing / Seabed Levelling Ops.
- Moonpool / Surveying Ops.



A vessel with the latest techniques and market demands



The godmother of the **Lingestroom**
Mrs I.C. van
Wijngaarden-Ruitenbeek
received a gift from the
Damen Hardinxveld
Managing director Jos van
Woerkum

The godmother in her speech thanks the owners Wim and Corry van Wijngaarden for the invitation she received to baptism this beautiful vessel.



The owners Mr. Wim van Wijngaarden and Mr. Peter van Wijngaarden received a fine painting from the Damen Shipyard Hardinxveld-Giessendam

The Captain of the [Lingestroom](#) received a clock/barometer set and the chief officer the bottle neck from the christening ceremony



A special gift from the owners was a donation for the local Scouting group

The Company received from Mr. Keita Shinohara the interim green award certificate. He mentioned in his speech that hopefully the next visit he can issued the full certificate





Photo: G.J. de Boer

Flag change from the yard to the owners



Photo: G.J. de Boer

A very happy van Wijngaarden family with this new beautiful vessel

+++++

Towingline thanks the owners – Van Wijngaarden Marine Services and the yard – Damen Shipyard Hardinxveld-Giessendam for their hospitality and invitation for the christening ceremony of the Shoalbuster 3512 tug “[Lingestroom](#)”

Towingline/Tugs Towing & Offshore News wish the vessel, the owner and her crew in all-weather work circumstances safe voyages



WEBSITE

[HTTP://WWW.TOWINGLINE.COM](http://www.towingline.com)

ARE YOU ALSO INTERESTED IN THE FREE TUGS TOWING & OFFSHORE NEWSLETTER. PLEASE VISIT THE WEBSITE [WWW.TOWINGLINE.COM](http://www.towingline.com) AND SUBSCRIBE YOURSELF FOR FREE
