



ugs owing & Offshore Newsletter

17th Volume, Special

Dated 09 December 2016

BUYING, SALES, NEW BUILDING, RENAMING AND OTHER TUGS TOWING & OFFSHORE INDUSTRY NEWS

TUGS TOWING & OFFSHORE NEWS SPECIAL



Advertisement

	PROVEN DESIGN & STANDARDISED FIRST CLASS COMPONENTS	

On Friday December 9, 2016 the new build Damen Shipyards Hardinxveld yard number 571705 Shoalbuster 2709 “[Isa](#)” was christened at the Dutch shipyard

Shoalbuster [Isa](#) (Imo 9787950) is the newest addition to the V.O.F. sleepboot ISA – Wijk bij Duurstede

[ISA](#) is a shoalbuster 2709 type Designed for multiple roles undertaking varied assignments in diverse working environments. Especially designed to work in shallow as well as deeper water, often in areas of limited manoeuvrability. Designed for heavy duties with an optimum bollard pull in combination with a shallow draft.

The multifunctional tug is built for Towing, mooring, pushing, anchor handling, and dredging support operations

She is classed I ✕ HULL • MACH Tug unrestricted service AUT-UMS
ILT unrestricted regulations

Yard number 571705



Sponsor lady of the Tug/Workboat **Isa** was Miss Isa Mastenbroek, daughter of Willem-Harm en Miranda Mastenbroek owner of the vessel





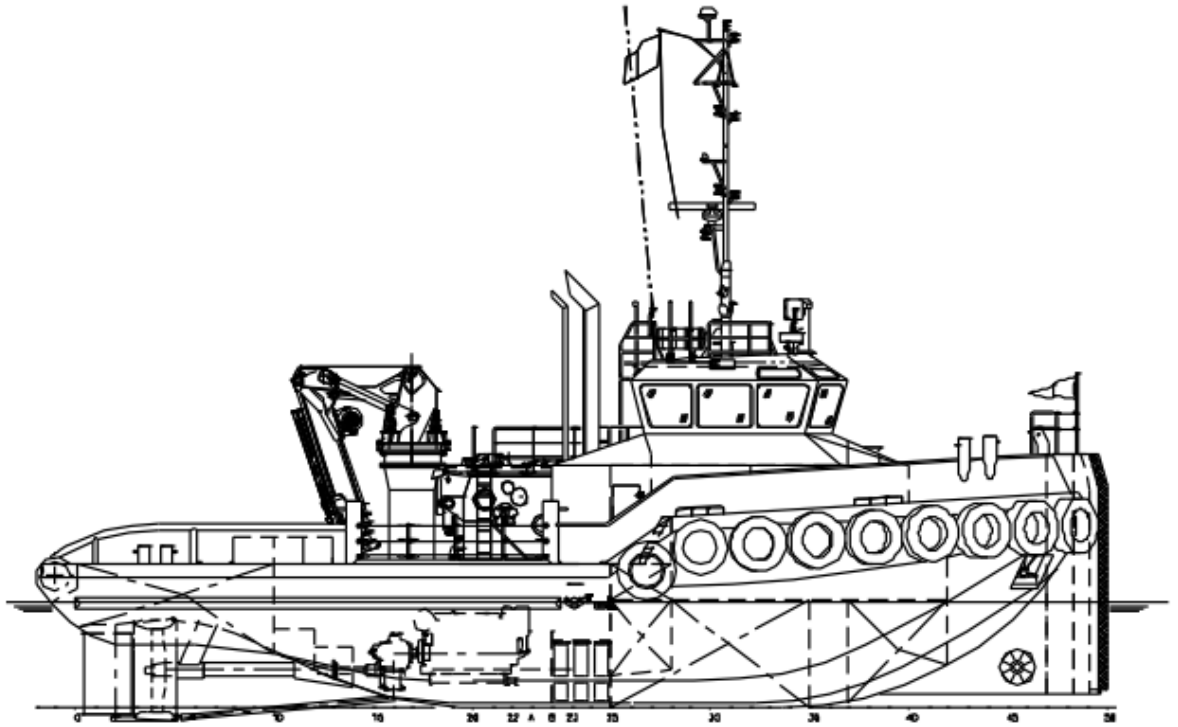
Photo: Damen



The tug was handed over by Damen yard manager Jos van Woerkom (left) to the new owner V.O.F. Sleepboot ISA Mr. Willem-Harm Mastenbroek (right)

The “[Isa](#)” has a length o.a. of 27.02 meters. She is width o.a. 9.10 meters and has a depth at half-length at sides of 3.60 meters. Her approx. draft aft is 2.63 meters. She has a grt. of 221 tonnes and has a displacement of 370 tons.



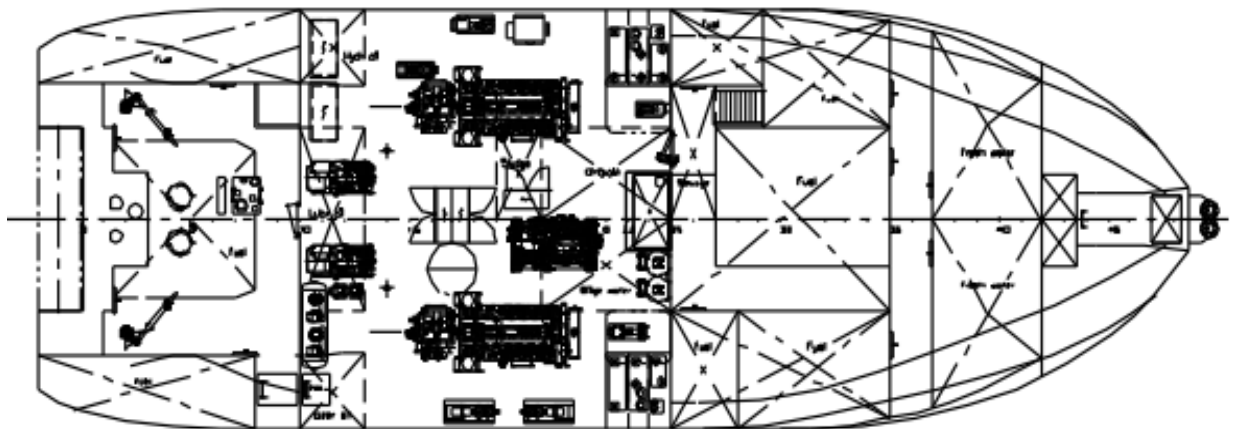
**Propulsion system:**

The main power is provided by two Caterpillar 3512C TA/A diesel engines each developing 1,119 bkW (1,500 hp) at 1,600 rev/min. This is delivered to a two screw arrangement 2,100 mm Promarin fixed pitch propellers turning in Damen Marine Components “Optima” nozzles via Reintjes WAF665 gearboxes with reduction ratio of 5.95:1. On trails, this configuration gave the vessel an average bollard pull ahead of 40.2 tonnes with a maximum bollard pull of 41.2 tons and a free running speed of 11 knots. The 200 bhp bow thruster is hydraulically driven.

PS Caterpillar Main engine



SB Caterpillar Main engine

*Below main deck***Auxiliary equipment:**

The **ISA** has two Generator sets made Caterpillar C-4.4 TA units, each with an output of 86.3 kVA, 50Hz – 230/400V AC; A diesel driven hydraulic set Caterpillar C-90 TA with a capacity of 269 kW at 1,800 rpm. The fuel separator is from Westfalia type OTC-2. The transfer pumps for water and fuel are type SIHI with a capacity of 50m³/hr at 4.8 bar. The two Compressors has a capacity of 175 L/min each.

Photo's



Two Caterpillar generator sets



Main Switchboard



Electric power distribution board



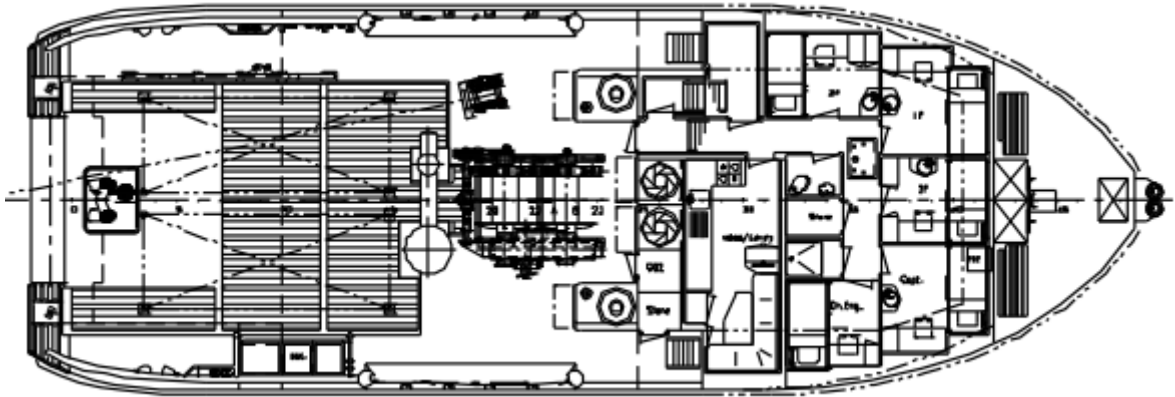
Air compressor set



Hydraulic/diesel set



Hydraulic power pack

Deck layout:**Deck Lay out:**

The deck machinery comprises a two DMT hydraulic driven Anchor Winches. Two Pool (HHP) anchors of 275kg each with a 19 mm short-link anchor chain 192.5m. The anchorhandling/towing winch is a DMT Waterfall execution, hydraulically driven winch with a towing pull capacity of 50 ton at 4.0 m/min pull, slack 0-23m/min and a holding power 125 ton. On the drum is a wire fitted with 850 mtrs in length and with a diameter of 40 mm. The anchor handling winch has a towing pull capacity of 100 ton at 2.8 m/min pull, slack 0-16/min and a holding power 125 ton. On her drum is a wire with a length of 650 mtrs and a diameter of 40 mm fitted. The deck crane is from HS Marine type AKC185/18.5 E4 with a lifting capacity of 5.5 tons at 18.5 mtrs. On the aft deck is a Dromec HPV-12000 tugger winch mounted with a capacity of 12 tons at 4.5m/min. Finally fitted on the vessels stern deck is a towing pin set type WK Hydraulics double pin type with chain stop

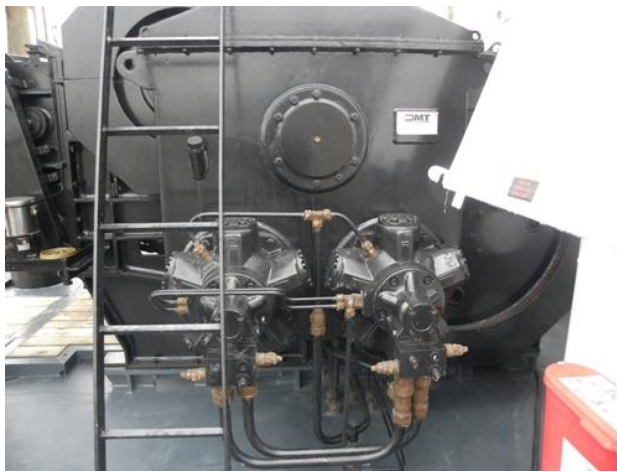
Two drums Towing / Anchor Handling winch bridge view



Advertisement



Towing / Anchor handling winch arrangement deck view



Tuggerwinch



Anchorwinch



Ship's Bell

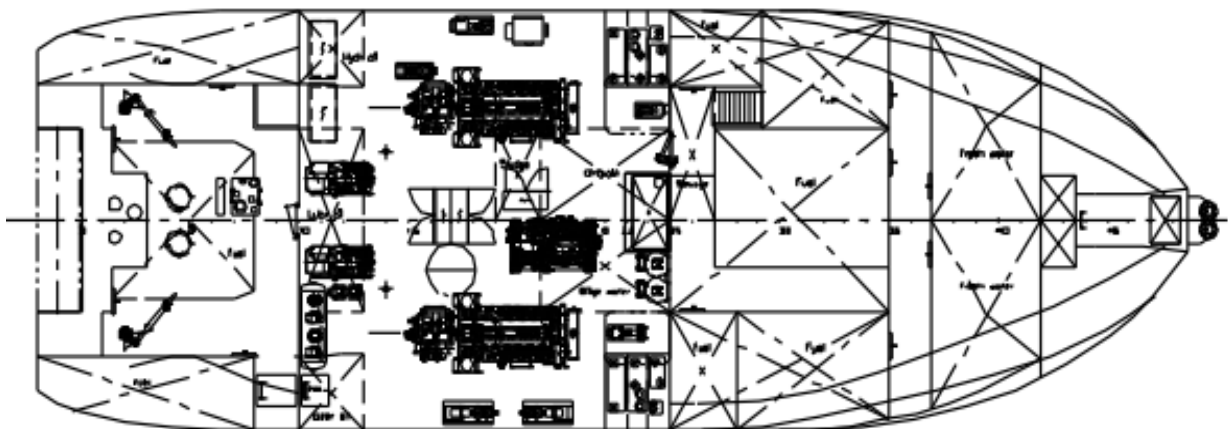


Ship's Bell with owners Logo

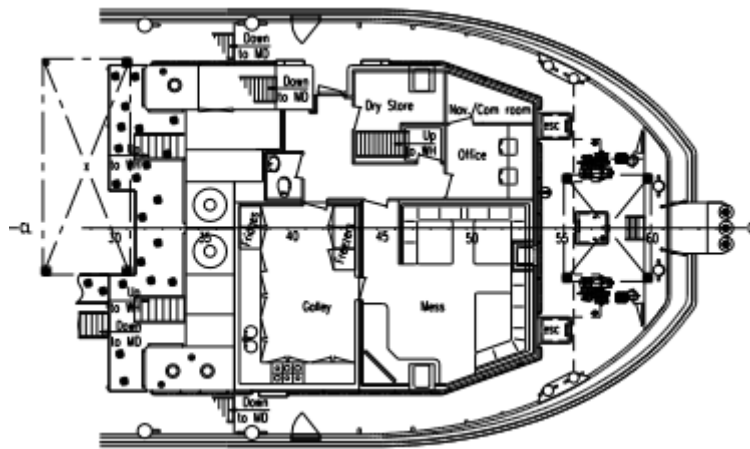


V.O.F. Sleepboot ISA

Tank arrangements/capacity:



The tug consist tanks for the following liquids; Fuel tanks capacity of 125.1 m³; Fresh water tanks with a capacity of 30 m³; Lubrication oil with a capacity of 3.9 m³; Hydraulic oil with a capacity of 1.5 m³; Gear oil with a capacity of 1.5 m³; Dirty oil tank with a capacity of 4.3 m³; Bilgewater tank with a capacity of 4.3 m³; Sewage tank with a capacity of 2.2 m³; and a Sludge tank with a capacity of 1.4 m³.

Accommodation:

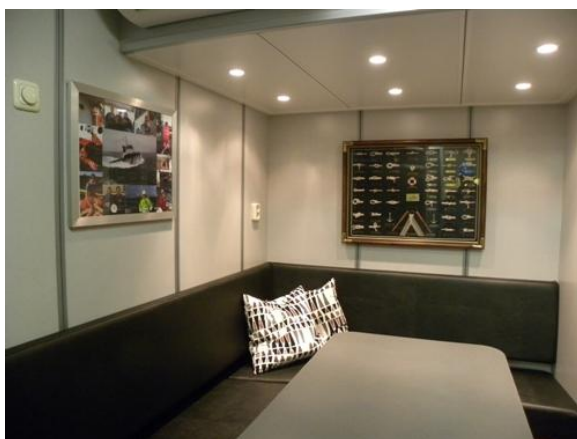
The tug has been outfitted to the highest standards heated and air-conditioned living quarters for 7 persons, consisting of three single crew cabins and two double crew cabin a galley and a messroom and sanitary facilities.



Captain's cabin



Double bedroom cabin



Messroom



Galley

Nautical and Communication Equipment:

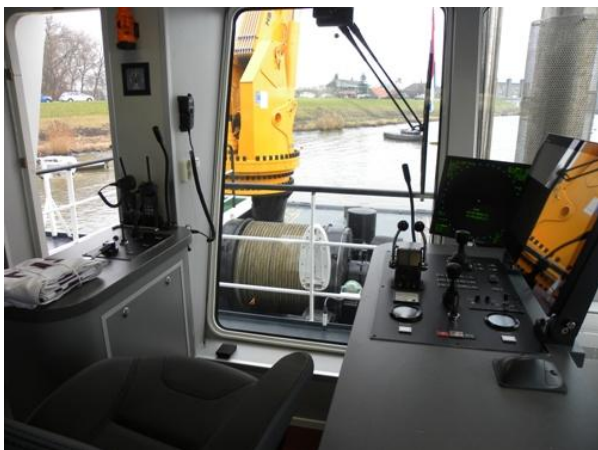
The bridge is equipped with extensive nautical and communication equipment. The nautical equipment consist two Radar system Furuno FAR-2117; an Anschuetz Standard 22 Compact Gyrocompass; a Magnetic compass Cassens & Plath Reflecta 1, a Furuno GP-150D-GPS; a Furuno FA-150 AIS; a Radio Zeeland Seapilot 76 Autopilot; a Furuno FE 700 Echo Sounder, a Furuno NX700 Navtex receiver; a Marble 421 Bridge watch alarm; two Pesch 2000W searchlights. The communication consist two Thrane & Thrane Sailor RT6222 VHF/DSC class A radio telephone; a Thrane & Thrane 6310 Single Side Band/DSC; a Speedlog Furuno DS-80; a Sigma 700 Intercom system; a Thrane & Thrane type TT-3000E Mini-C system GMDSS; a EPIRB jotron type Tron-40S and a Radar transponder Jotron type Tronsart.



PS forward Bridge console view



SB forward bridge console view



Aft bridge console



SB fore bridge chart table

Two chairs are fitted on sliding rails for the forward manoeuvring console and the aft manoeuvring console. Further a bridge chart table is found at the starboard foreward bridge. The very spacious bridge has a beautiful good looking layout with an around view over the fore deck, aft deck and sides. This Damen Shoalbuster is again built to the highest standards.



The godmother of the **ISA** Miss Isa Mastenbroek received a gift from the Damen Hardinxveld Managing director Jos van Woerkom

The owner received a photo from the ISA and a bridge clock and barometer from yards Managing director Jos van Woerkom



A special moment during the ceremony was the special gift for the owner from his son.

As from now the tug is available for charters. Pls. contact owners V,O,F. Sleepboot ISA

+++++

Towingline thanks the owners – V.O.F. Sleepboot ISA. and the yard – Damen Shipyard Hardinxveld-Giessendam for their hospitality and invitation for the christening ceremony of the Shoalbuster 2709 tug “ISA”

Towingline/Tugs Towing & Offshore News wish the vessel, the owner and her crew in all-weather work circumstances safe voyages



WEBSITE

[HTTP://WWW.TOWINGLINE.COM](http://www.towingline.com)

ARE YOU ALSO INTERESTED IN THE FREE TUGS TOWING & OFFSHORE NEWSLETTER. PLEASE VISIT THE WEBSITE [WWW.TOWINGLINE.COM](http://www.towingline.com) AND SUBSCRIBE YOURSELF FOR FREE

Merry Christmas and a happy 2017 for the Mastenbroek family

